

DIVINE[®] ANTILLES

PLAIN & TEXTURE UPHOLSTERY FABRICS

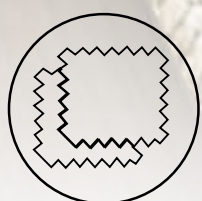
Marketing Brief



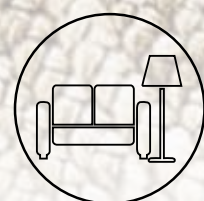
Introducing the Antilles upholstery fabric collection, a refined selection that epitomizes timeless elegance. Available in a palette of classic colors, this collection offers a luxurious soft hand feel combined with a subtle yet sophisticated texture. Designed for durability, it features water-repellent properties and a high Martindale rating, ensuring both beauty and resilience in any interior setting.



WATER REPELLANT



GOOD MARTINDALE



IDEAL FOR CONTRACT & RESIDENTIAL PURPOSE



EXPRESS DELIVERY

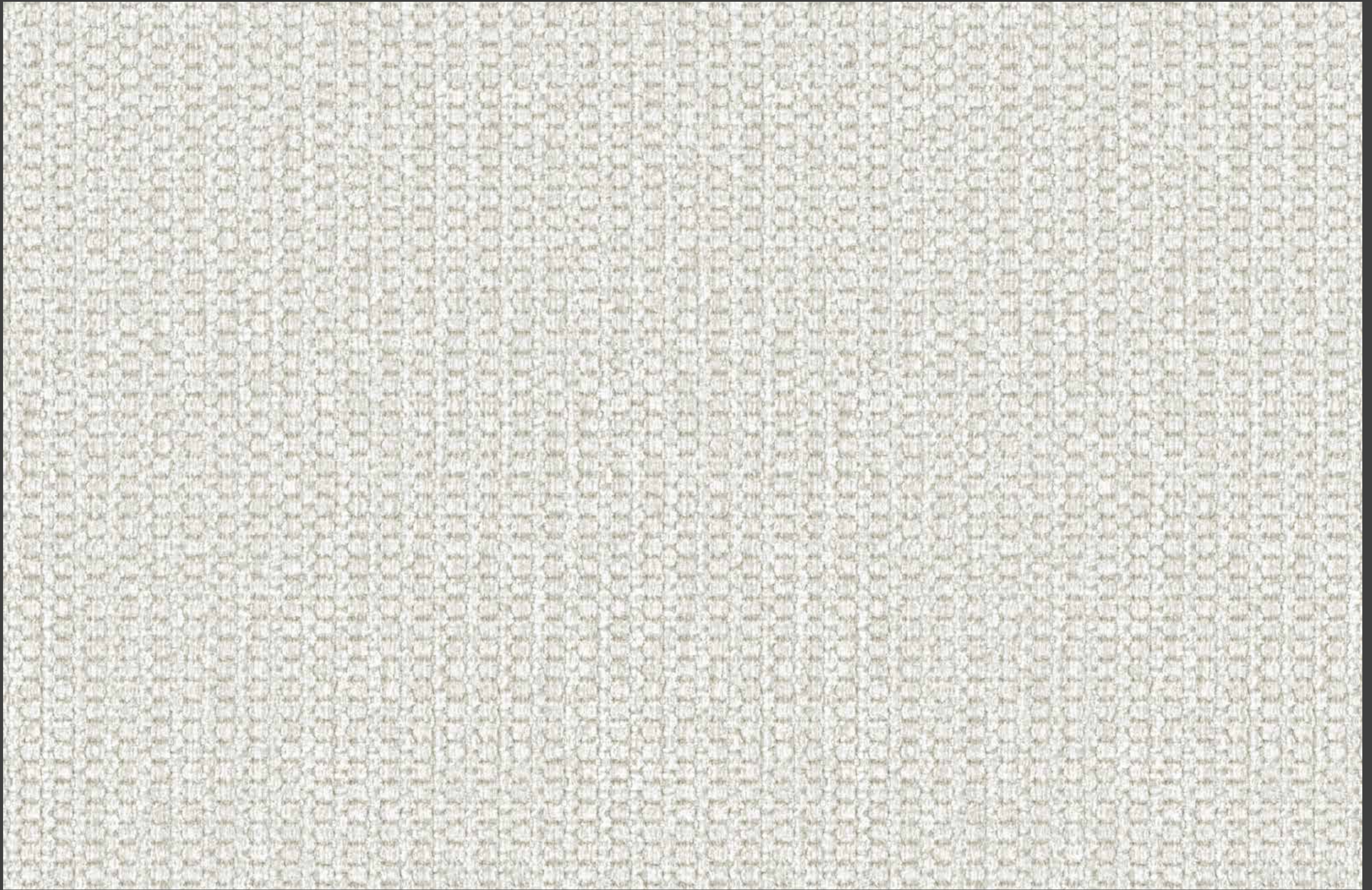


ANTILLES

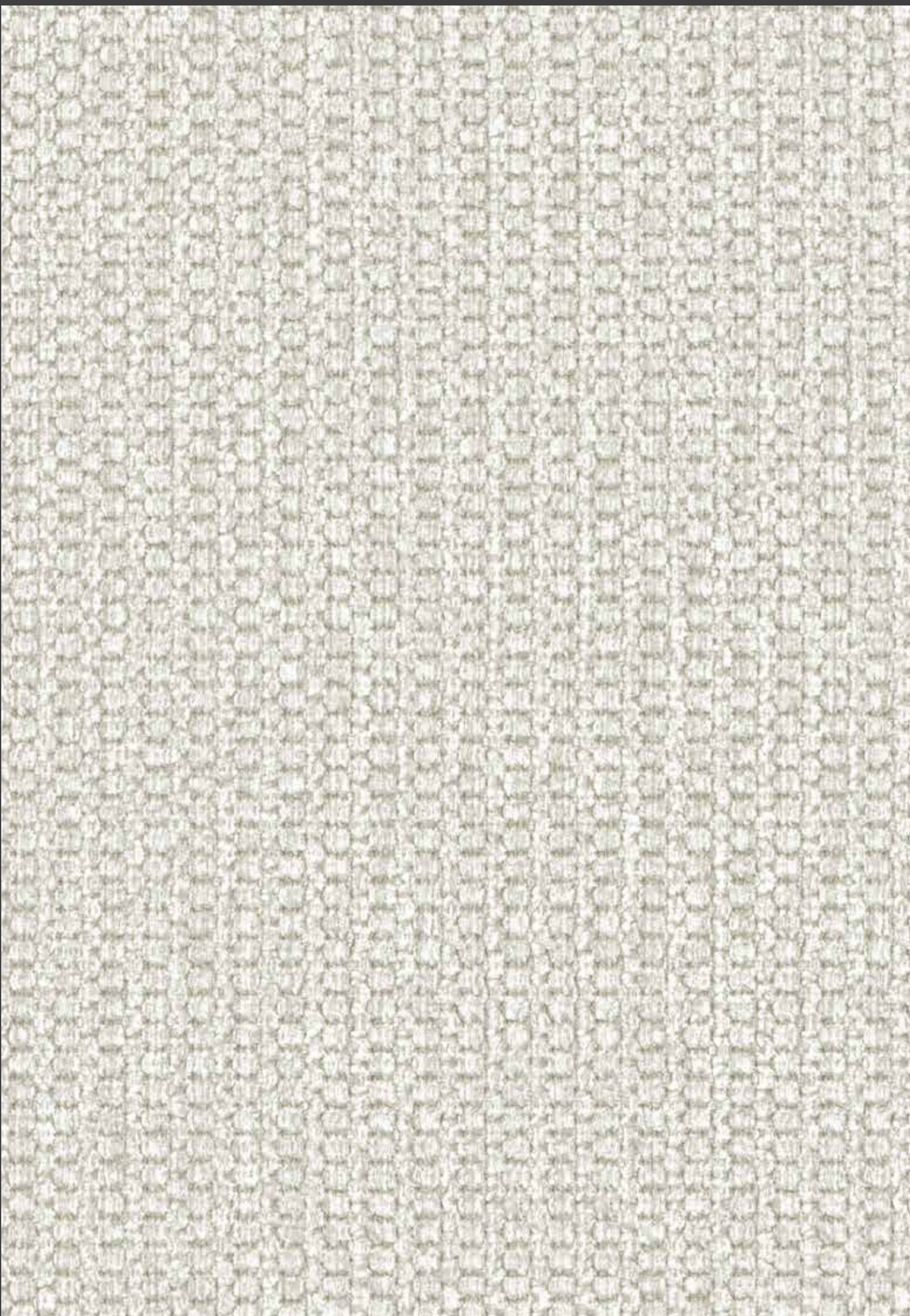
ANTILLES

15 COLORWAYS

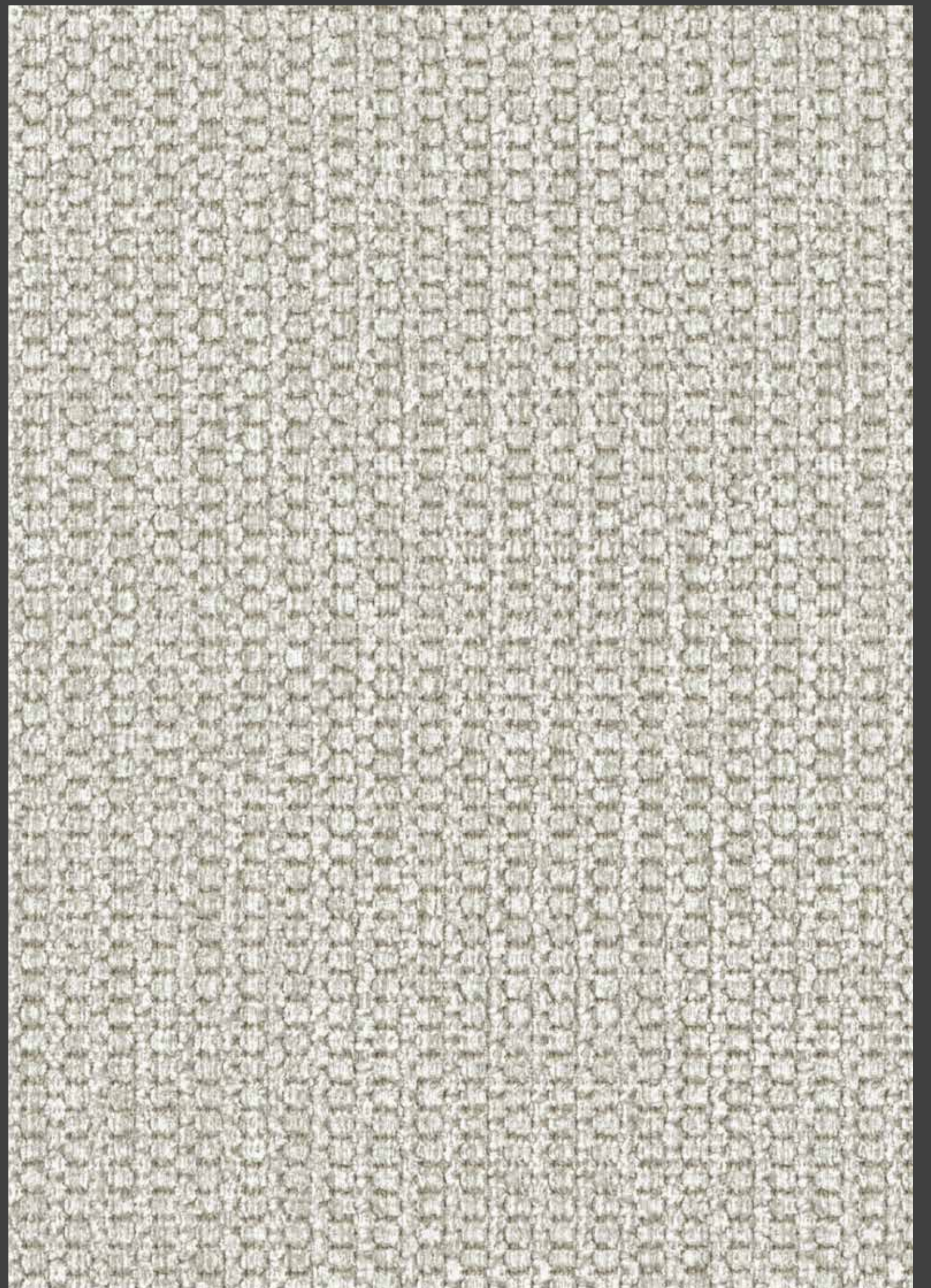
Introducing the Antilles upholstery fabric collection, a refined selection that epitomizes timeless elegance. Available in a palette of classic colors, this collection offers a luxurious soft hand feel combined with a subtle yet sophisticated texture. Designed for durability, it features water-repellent properties and a high Martindale rating, ensuring both beauty and resilience in any interior setting.



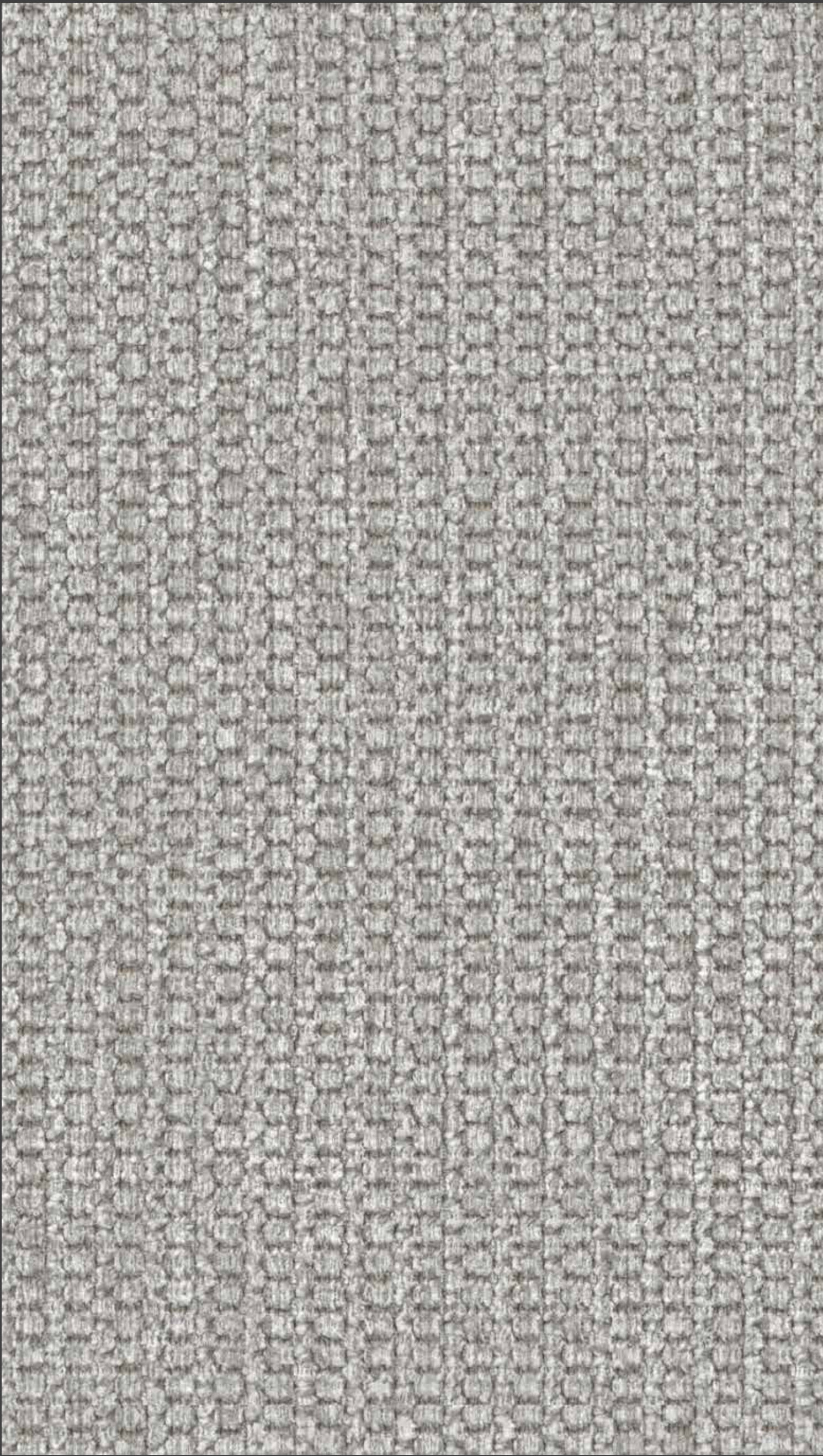
ANTILLES - SNOW



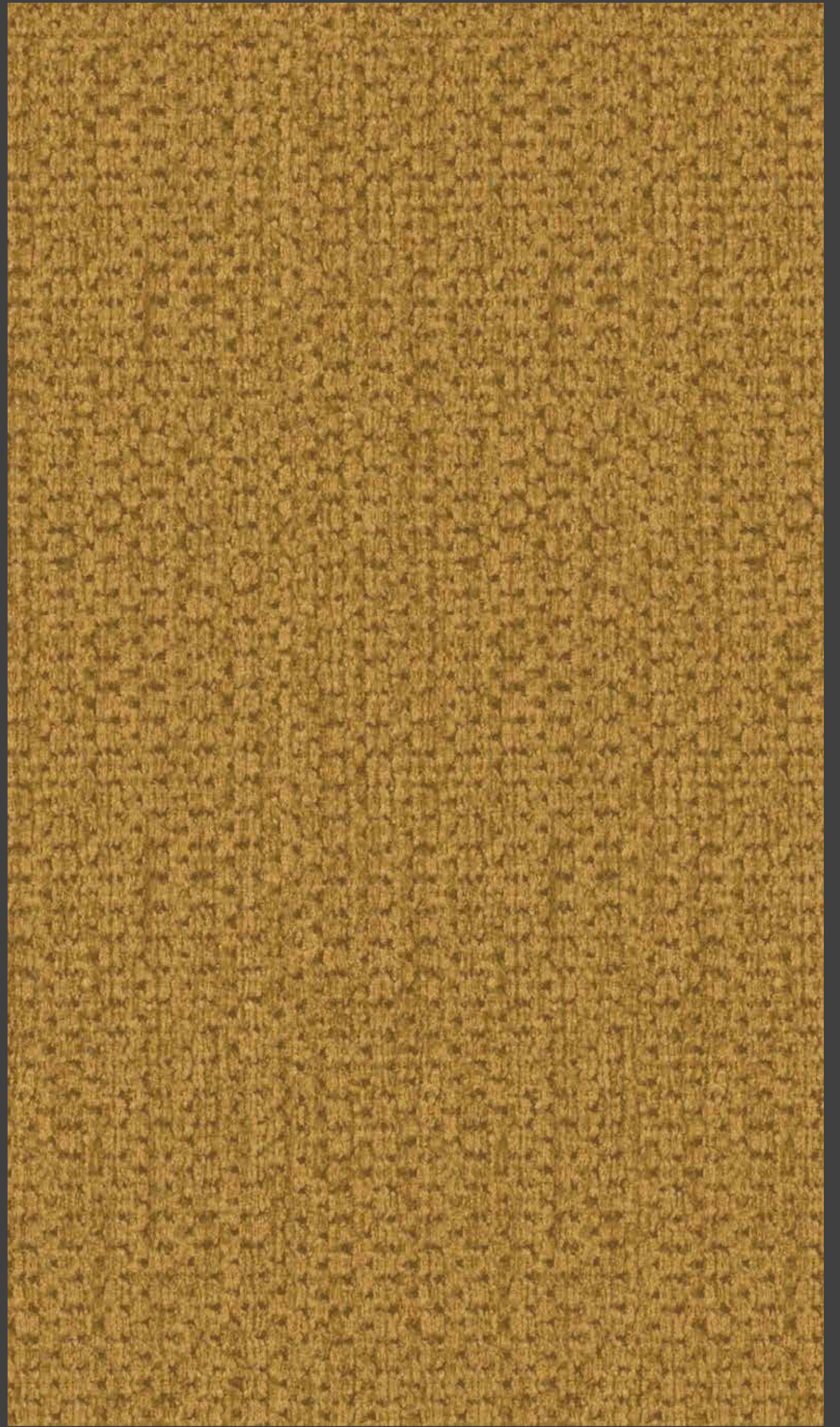
ANTILLES - IVORY



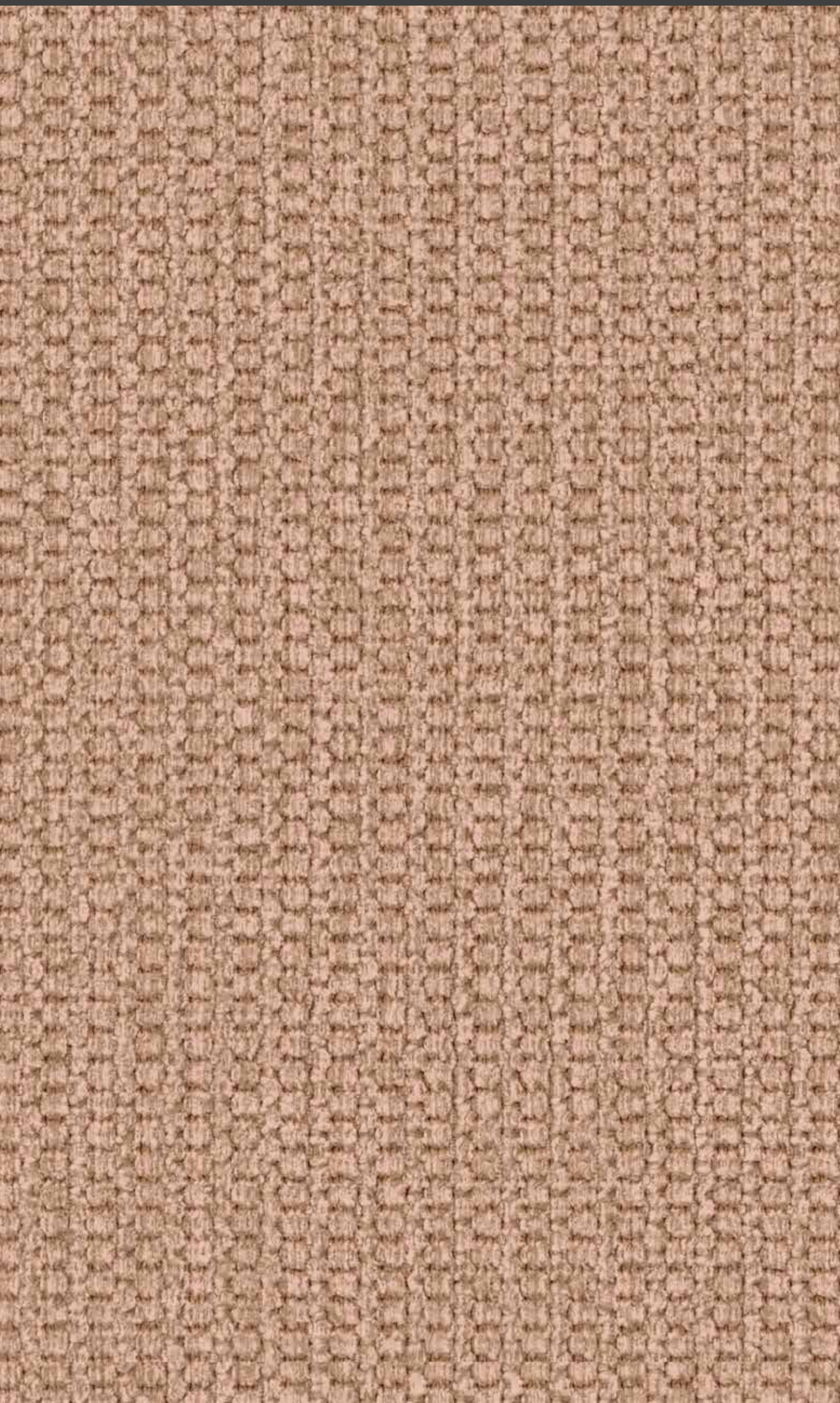
ANTILLES - DOVE



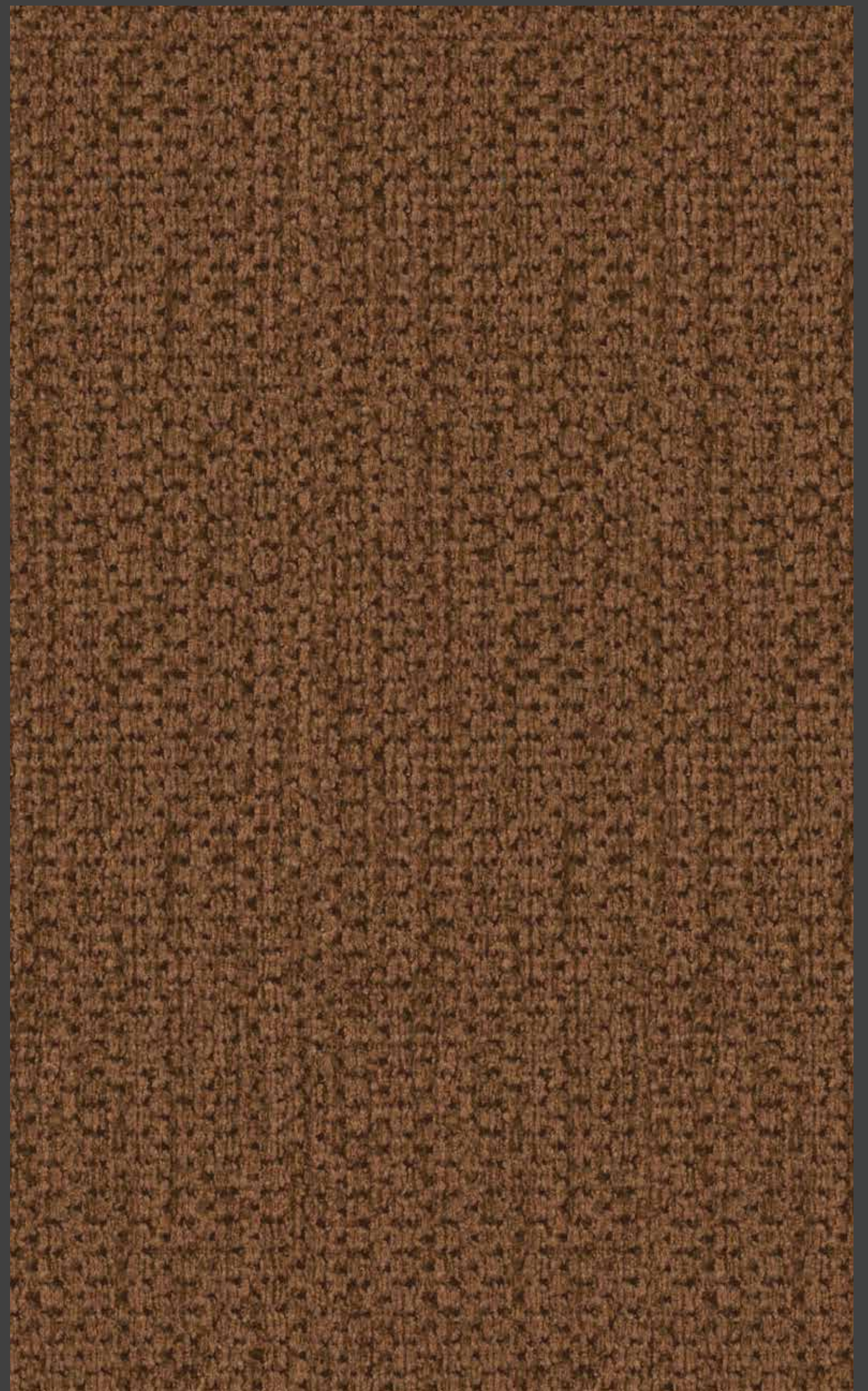
ANTILLES - SILVER



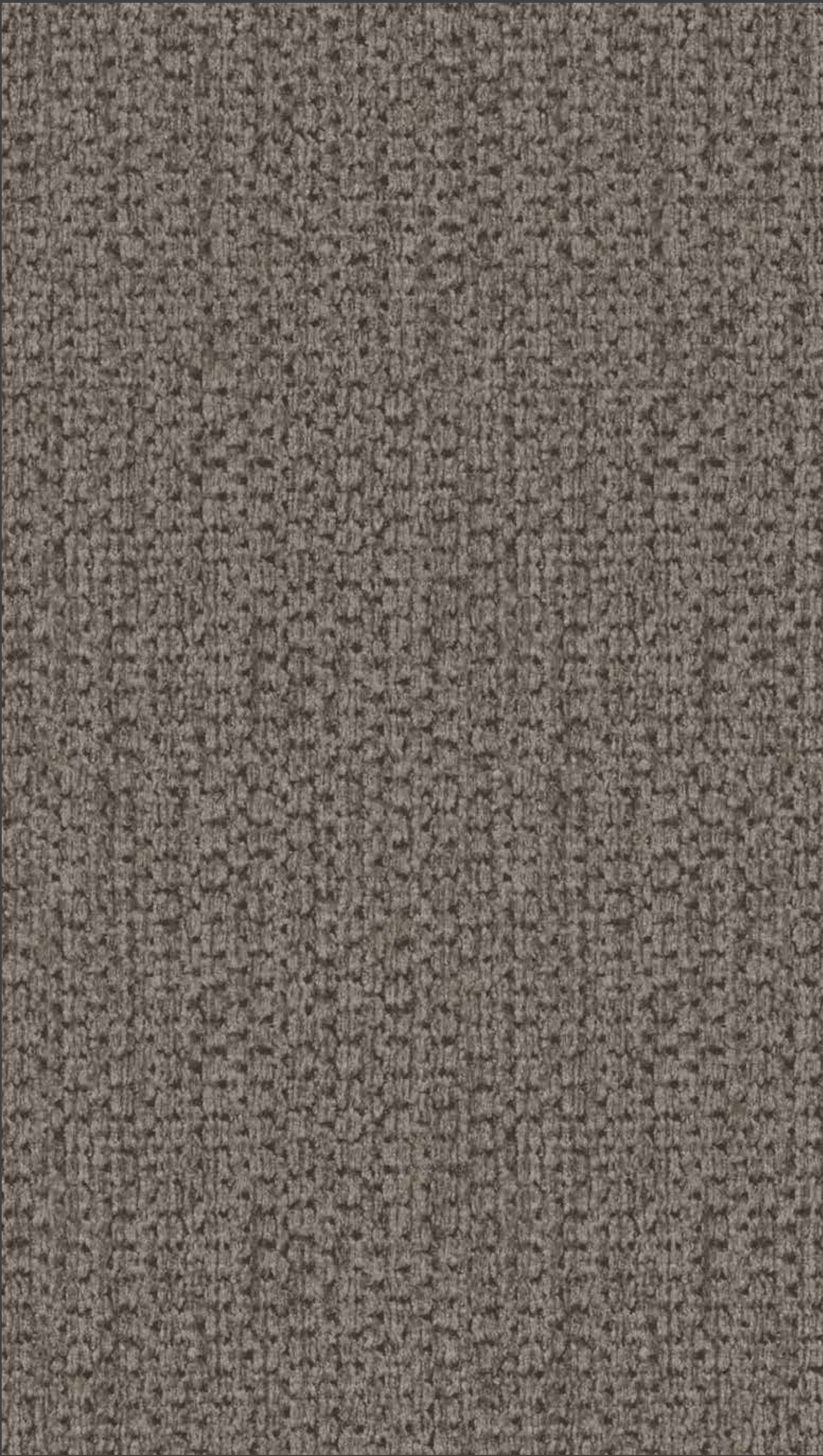
ANTILLES - OLD GOLD



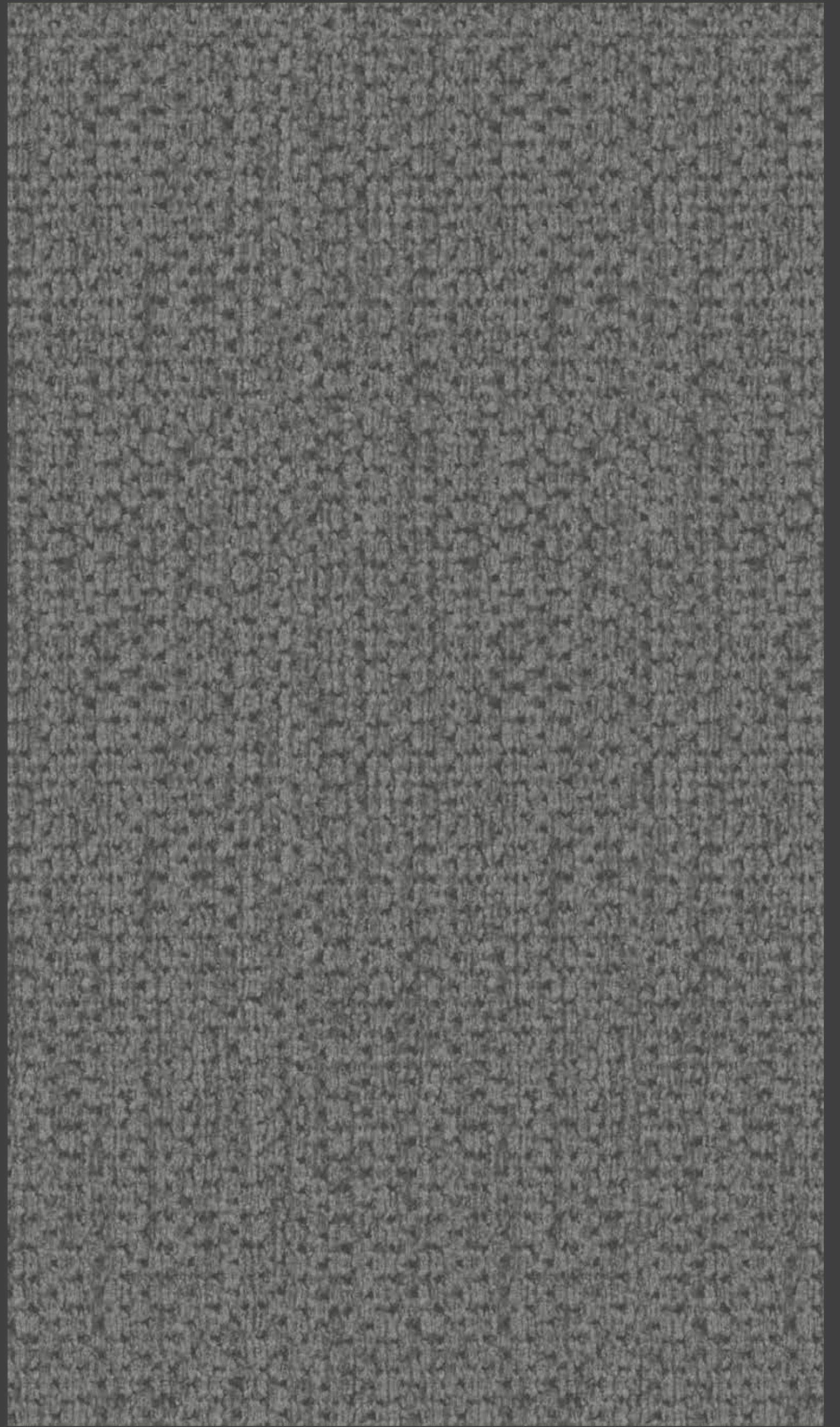
ANTILLES - PETAL



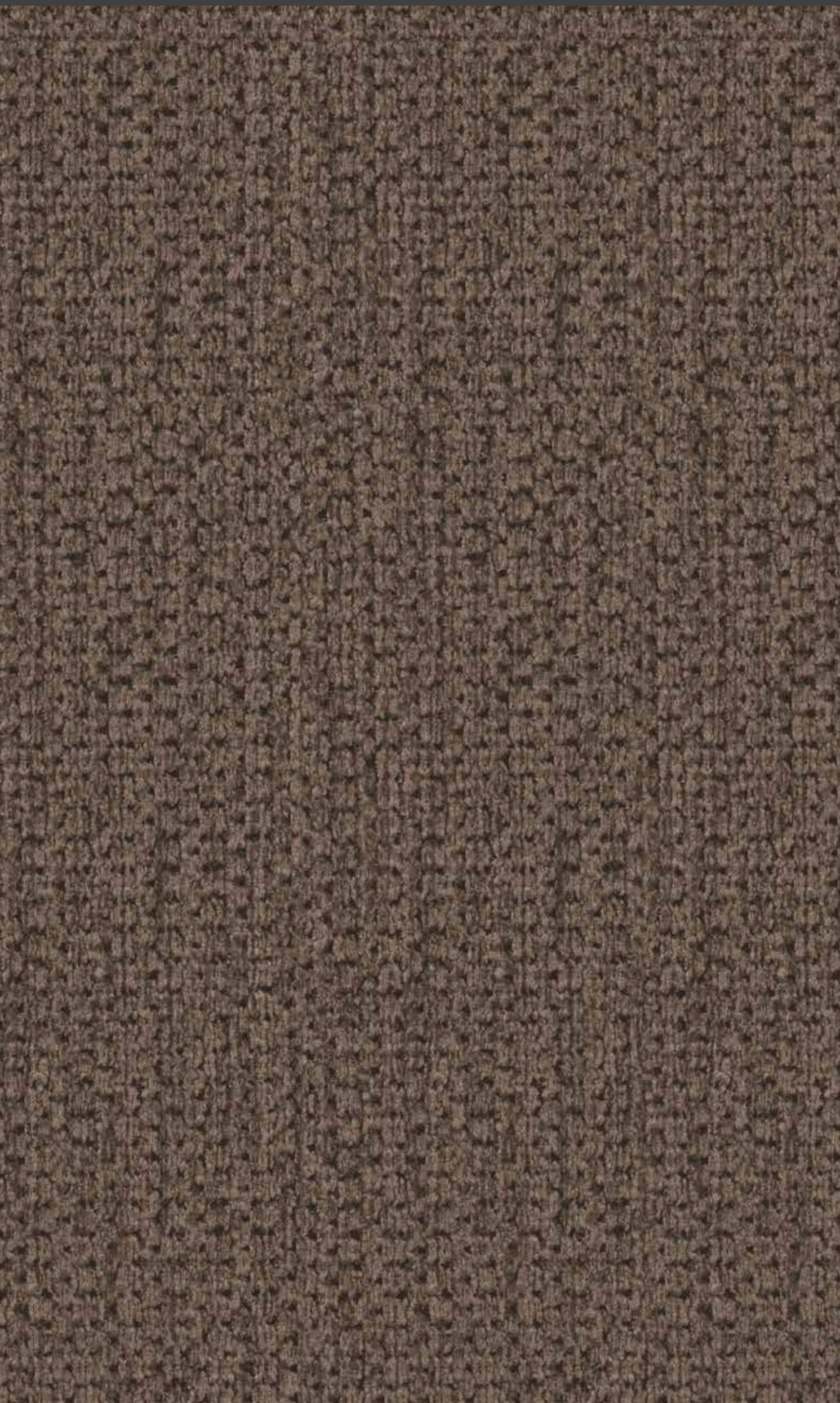
ANTILLES - MARIGOLD



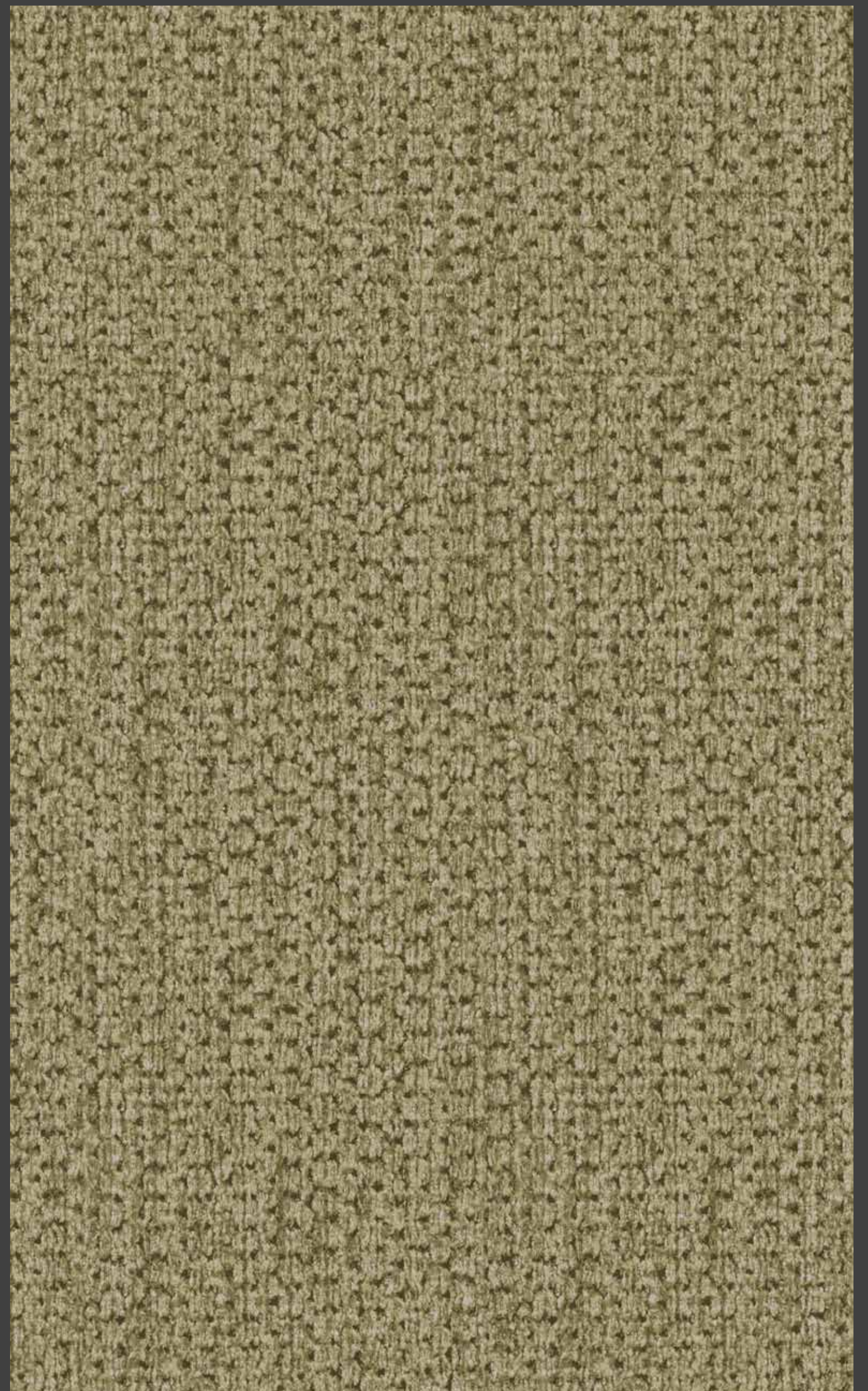
ANTILLES - TAUPE



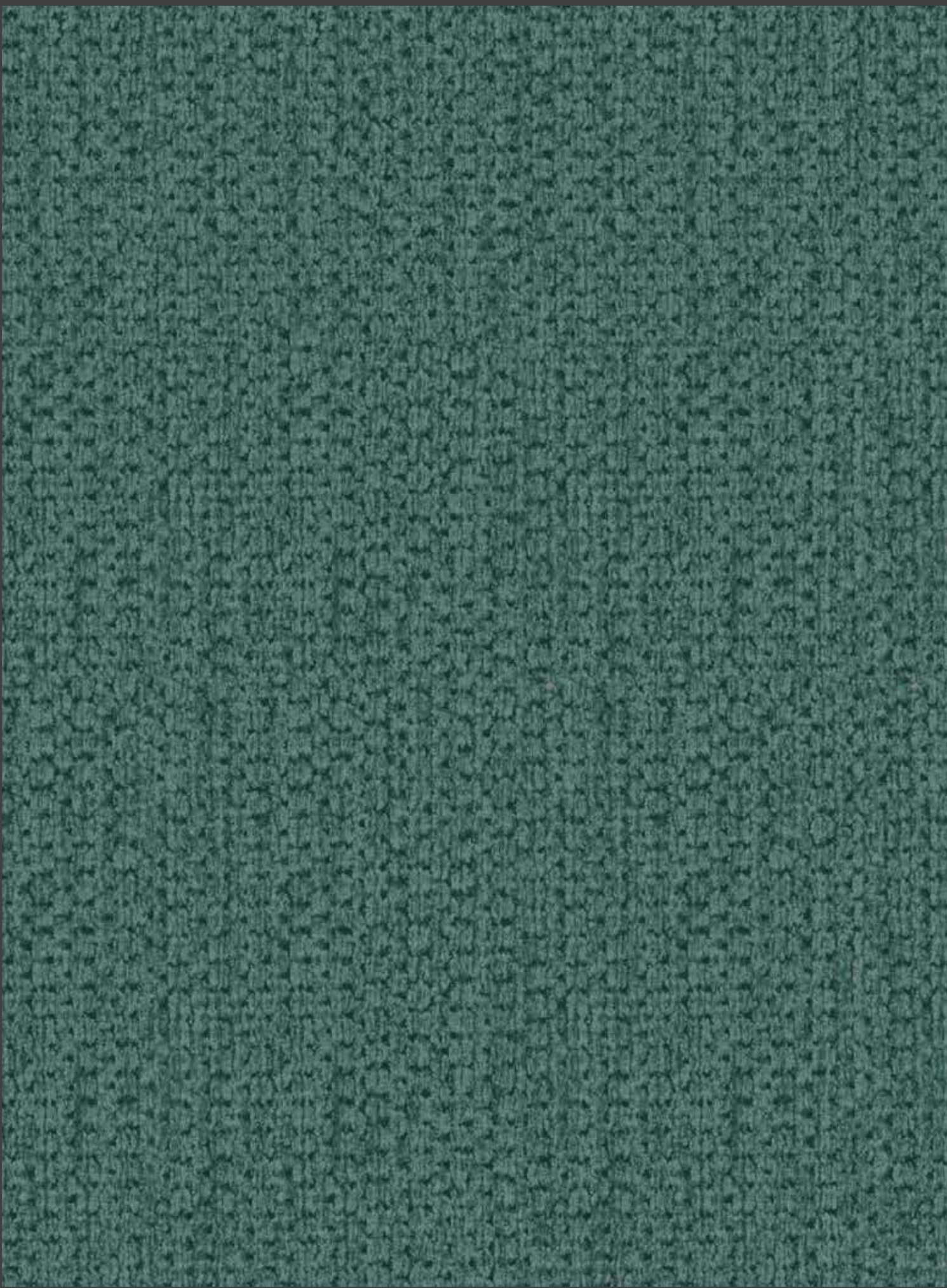
ANTILLES - ASH



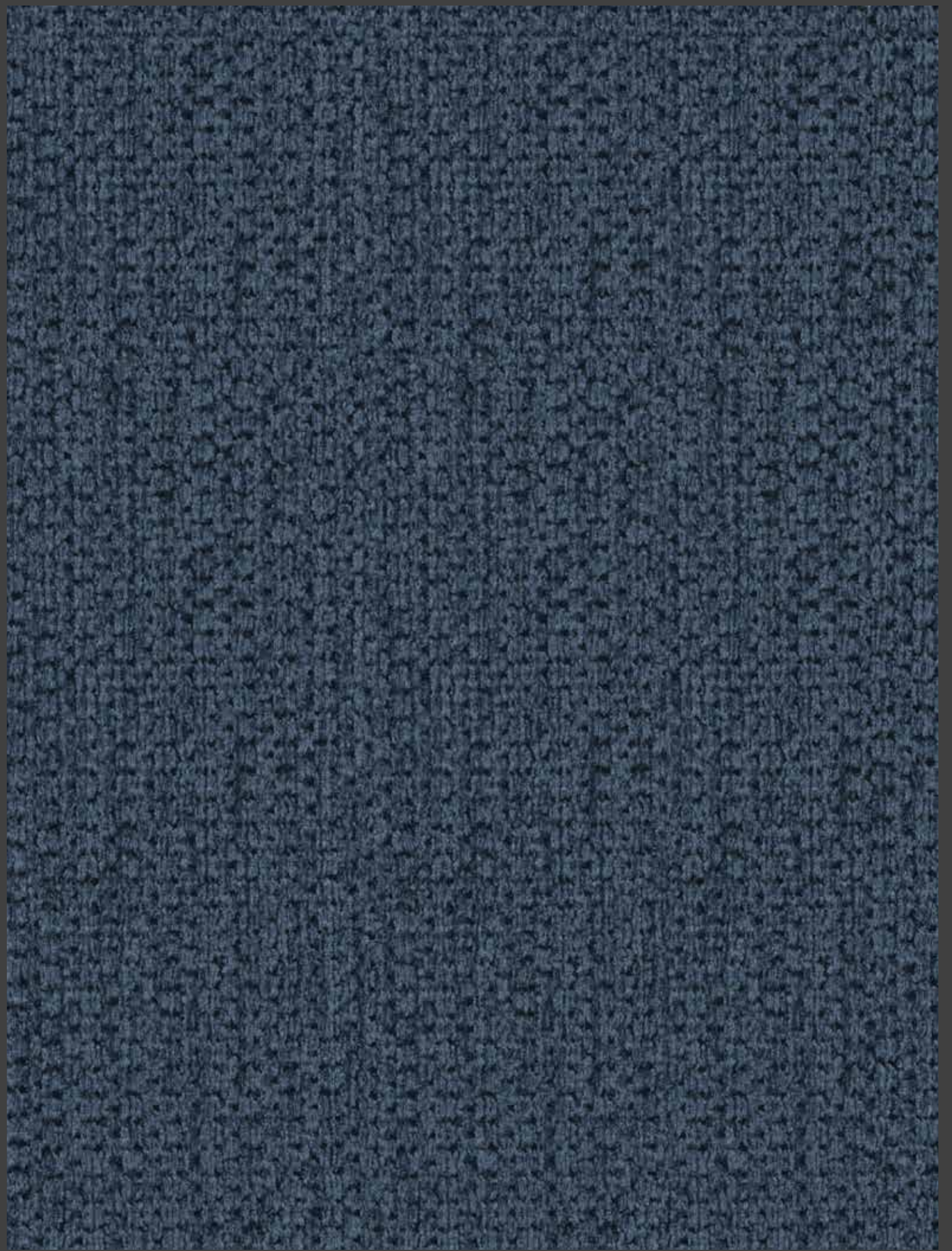
ANTILLES - EARTH



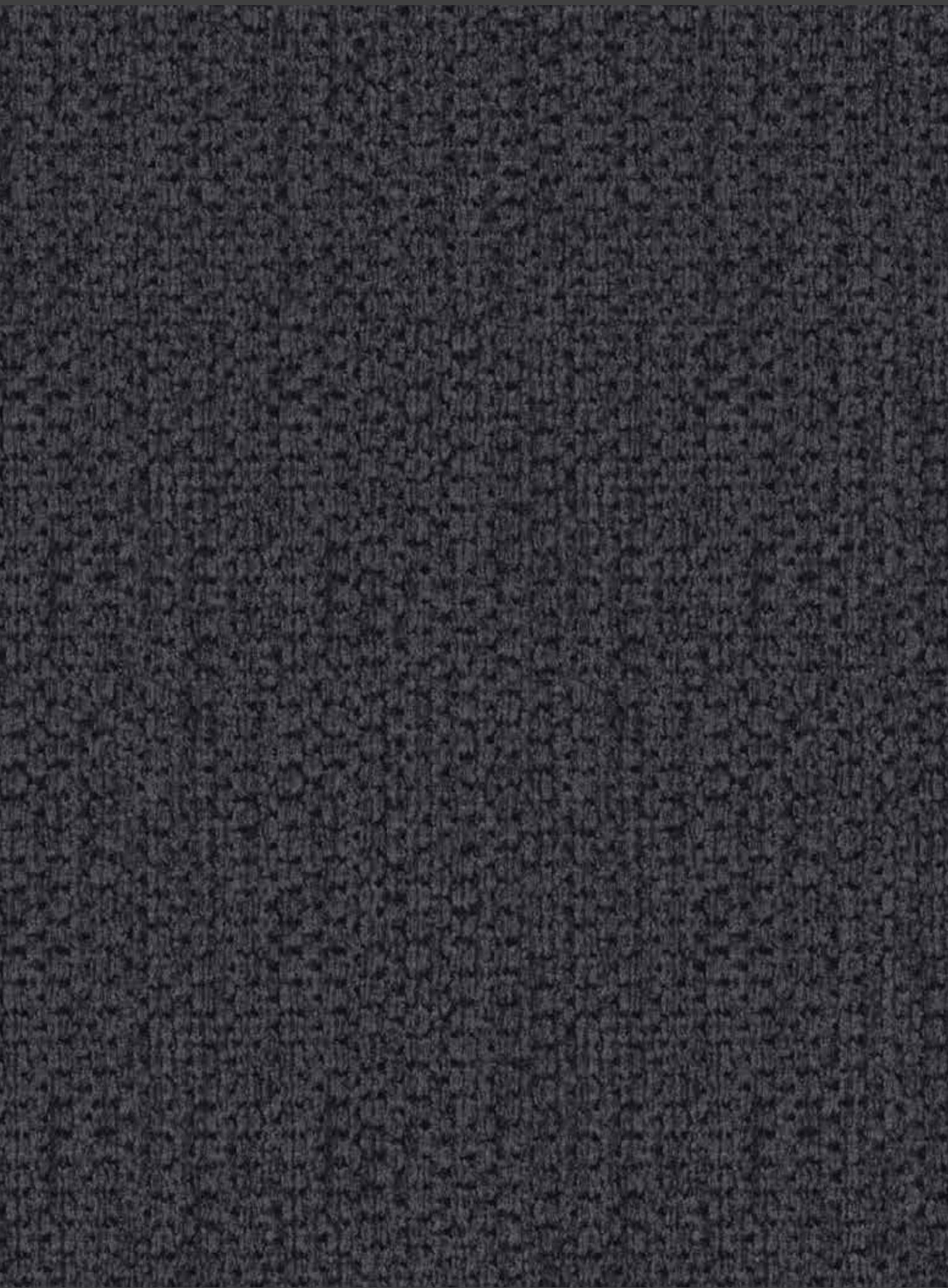
ANTILLES - OLIVE



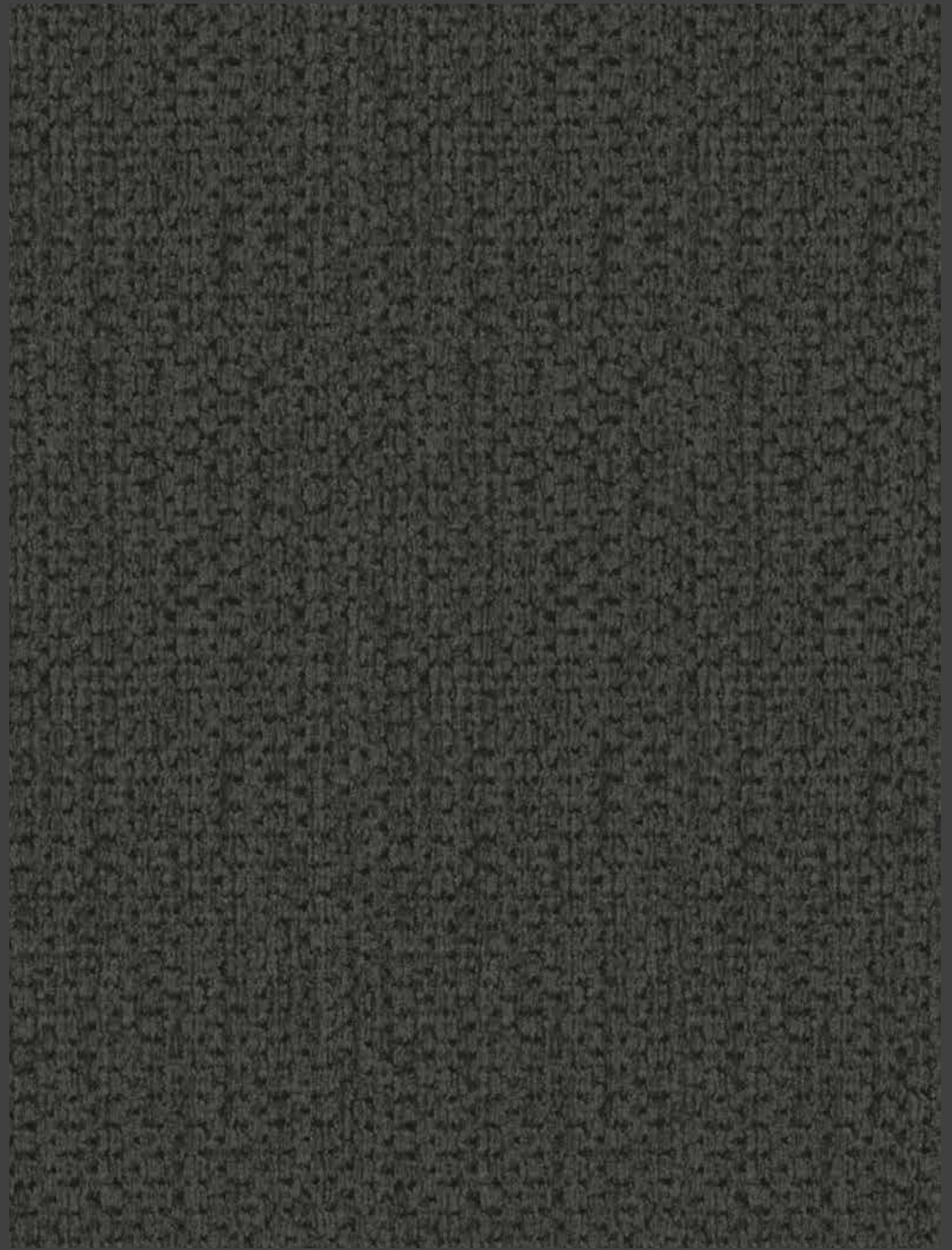
ANTILLES - TEAL



ANTILLES - LAPIS



ANTILLES - INDIGO



ANTILLES - CHARCOLE

TECHNICAL SPECIFICATION

Product Name	: ANTILLES 	Rec. Usage	:  
Width in CM	: 142	Care Instructions	:   
Repeat Size in CM	: HOR (1) x VER (1)	Martindale	: 25,000
Composition	: 100% PES	Pilling	: 3-4
Weight GSM	: 370	Color Fastness	: 4-5

For any further details, Please feel free to contact
09643403802, 0124-4632300

Corp. Off.: Plot No. 42, Sector 32, Institutional Area
(Near Medanata Hospital) Gurugram-122003 (Haryana)

• E-mail: crm@fandf.in • Website: www.fandf.online